



Patent Professional's Skillset: AI for Drafting, Prosecution, and Litigation Support

How Patent Attorneys & Agents Can Leverage AI Tools to Work Smarter

Jason Chuang

March 28, 2026

2026 ASEAN IPA Annual General Meeting



SINCE 1965

理律法律事務所

LEE AND LI

ATTORNEYS-AT-LAW

Today's Agenda

Several Ways AI Is Reshaping Patent Practice

01

Client Correspondence

Grammar, tone, and clarity — polished in seconds

03

Specification Drafting

Embodiment expansion and technical gap-filling

05

Patent Litigation Support

Technical document comparison and claim analysis

02

Presentation Preparation

AI-assisted summaries and slide layouts

04

Office Action Response

Novelty, clarity, and unity analysis via NotebookLM

06

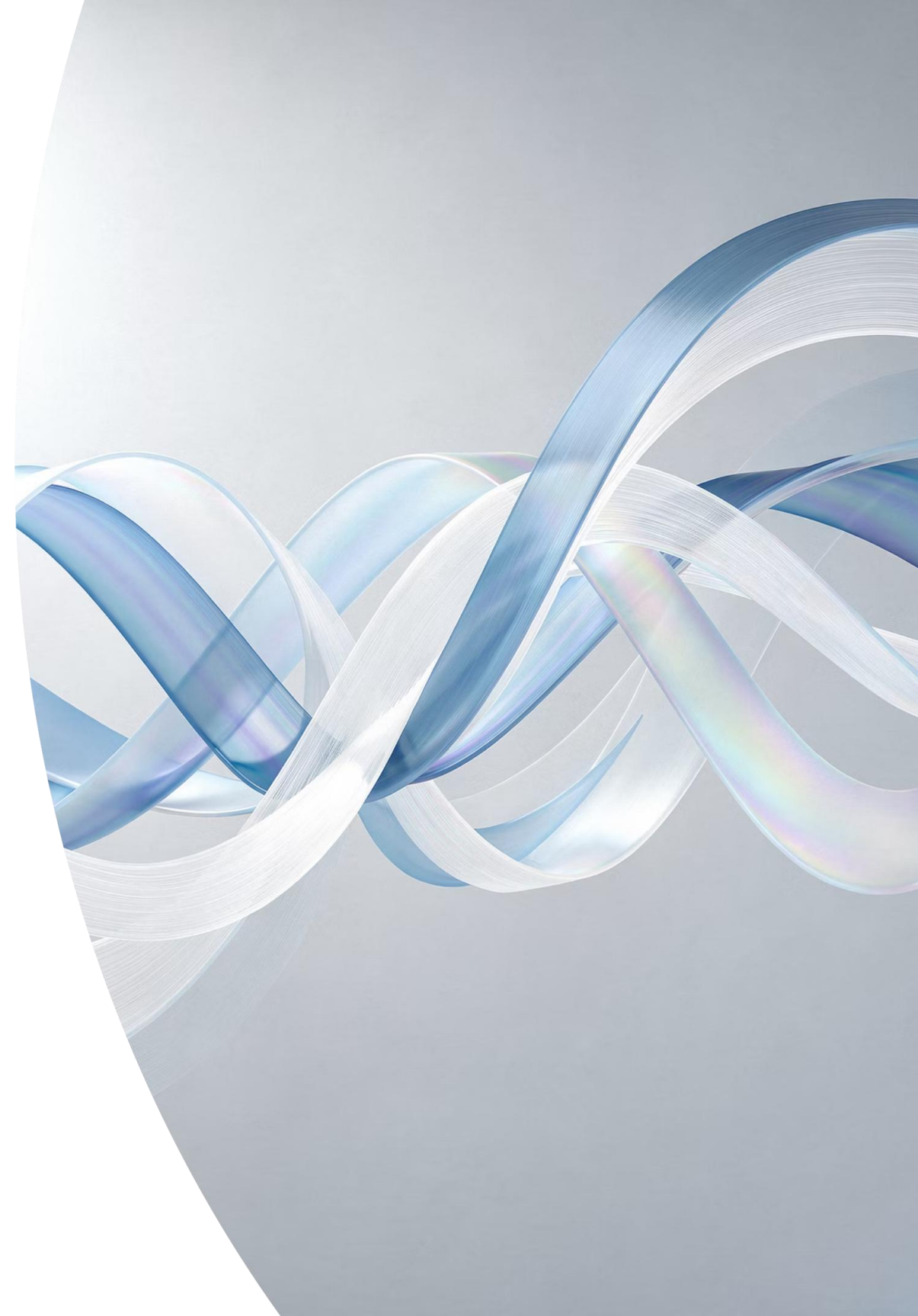
Key Reminders & Conclusion

Data security, professional judgment, and the road ahead

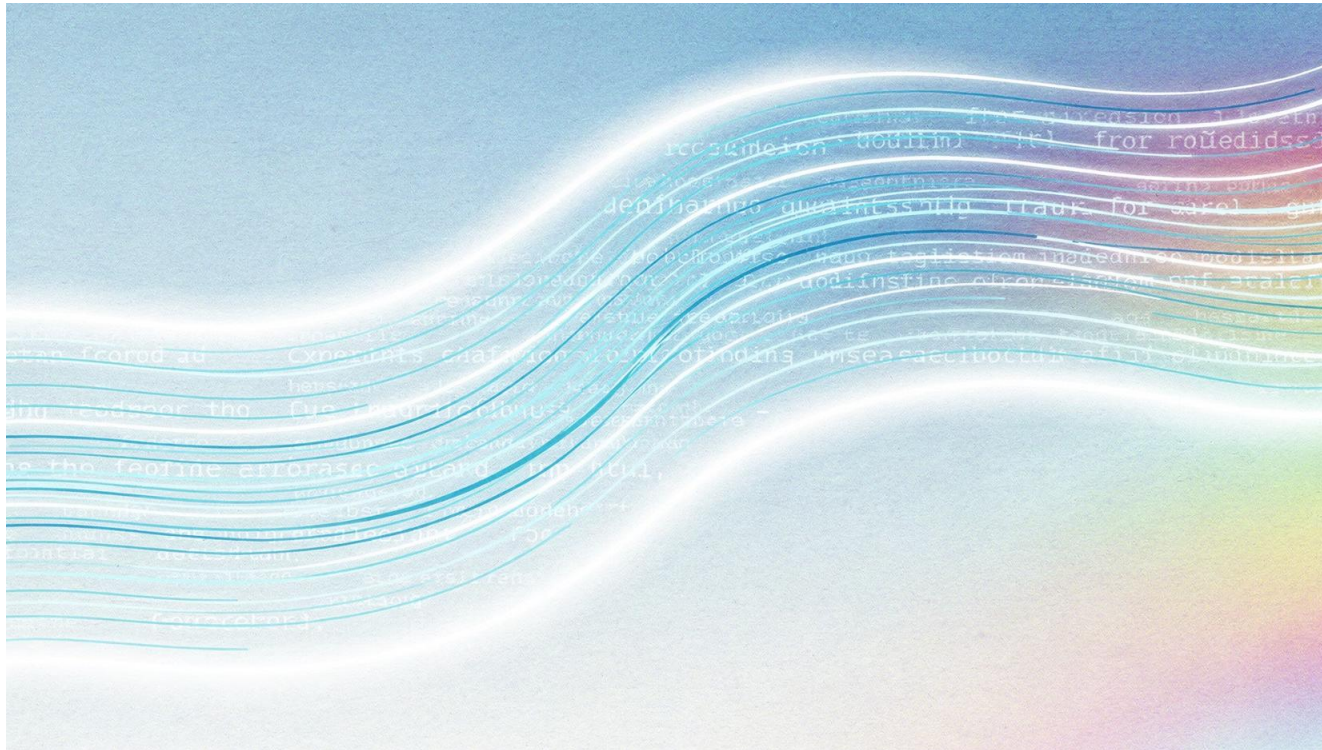
CHAPTER 1

Client Correspondence

First impressions matter — especially in international practice. AI keeps your English precise, professional, and persuasive.



Polishing Client Emails with AI



What AI Does for You

Patent attorneys frequently correspond in English with foreign associates, clients, and patent offices. AI tools help by:

- Tools like ChatGPT or Claude work well here — client names can be anonymized before submission.

→ Grammar & Syntax Check

Catch subtle errors that spell-checkers miss

→ Tone Refinement

Adjust from overly formal to natural professional English

→ Clarity & Flow

Restructure sentences so your intent is unmistakable

Presentation Preparation

Content Summarization

Feed a dense technical paper or case file into an AI tool and receive a clean executive summary — ideal for briefing slides or client-facing decks.

Slide Layout Design

AI tools can suggest visual hierarchies, arrange bullet points into structured layouts, and even generate slide templates — saving hours of manual formatting.

Input

Long technical report or legal memo

AI Process

Summarize → Structure → Visualize

Output

Ready-to-present, polished slide deck



CHAPTER 3

Specification Drafting

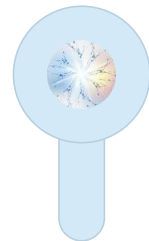
The most time-intensive stage of patent work — AI makes it faster, richer, and more comprehensive.

Three AI-Powered Drafting Techniques



Technical Gap-Filling

The client's disclosure often lacks foundational background. A local AI engine summarizes the disclosure and fills in missing technical principles automatically.



Embodiment Expansion

AI takes one disclosed embodiment and generates multiple alternative implementations — all consistent with the inventive concept, broadening claim support.



Strategic "Drafting Around"

AI suggests broader synonyms and technical equivalents for overly specific terms in your draft — helping you capture a wider scope of protection and anticipate competitor workarounds.

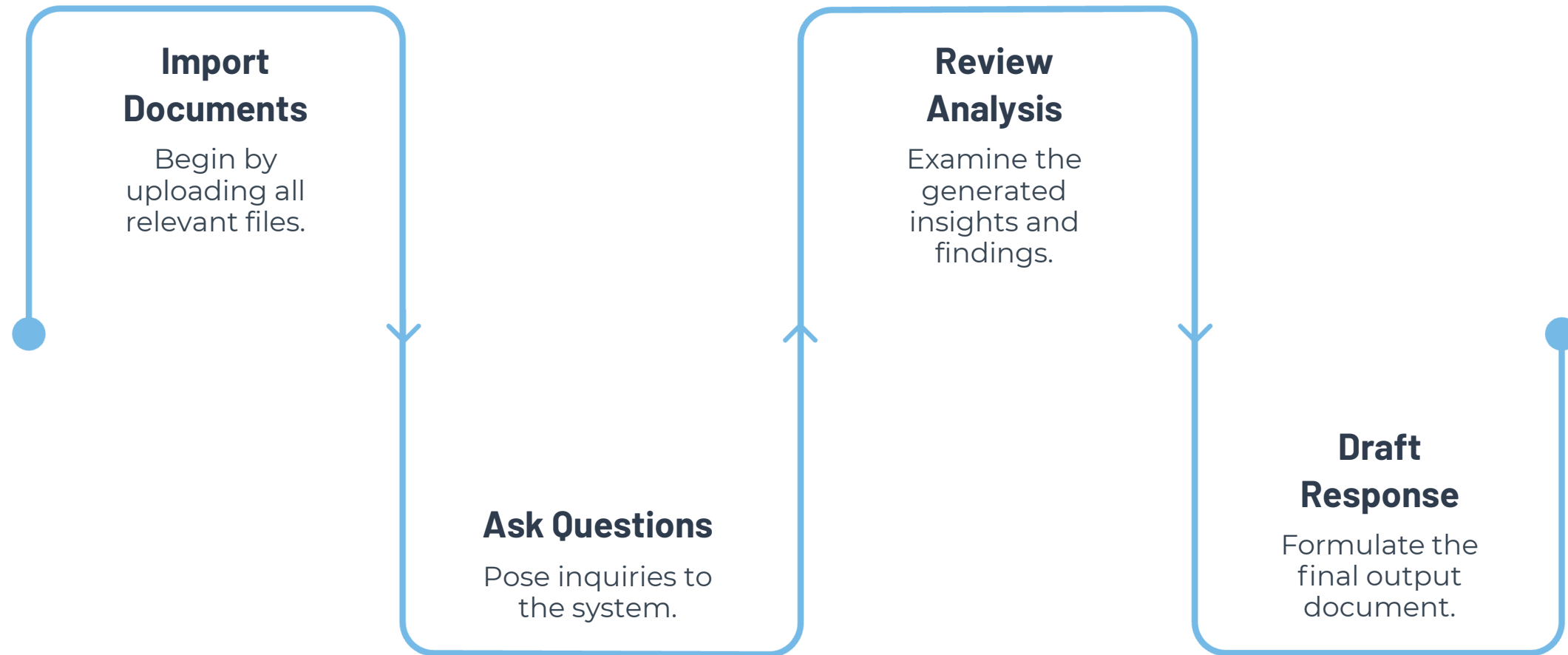
CHAPTER 4

Handling Office Actions

Office actions demand precise, evidence-backed responses. AI tools — especially NotebookLM — transform how practitioners analyze rejections.



Office Action Response: AI Workflow



Because NotebookLM grounds its answers strictly in the documents you upload, the risk of AI hallucination is significantly reduced compared to general-purpose chatbots.

Three Types of Rejections – Three AI Strategies

Novelty & Inventive Step

Import cited references into NotebookLM. Ask: *"Does the cited reference disclose all features of the independent claim? Why or why not?"* For specific paragraph citations, follow up: *"Does the cited paragraph actually disclose [specific feature]?"*

Clarity / Indefiniteness Objection

Import the application's specification. Ask: *"Based on the disclosure, what is the meaning of [disputed term] in the claims?"* AI anchors its answer to the spec — exactly as examiners and courts do.

Unity of Invention Objection

Ask AI to analyze each independent claim and identify shared technical features. Determine whether claims share a common technical character that distinguishes from prior art — the legal test for unity.



CHAPTER 5

Patent Litigation Support

Technical documents are at the heart of infringement disputes. AI accelerates the comparison work that once took days.

Analyzing Technical Datasheets in Litigation

The Challenge

Infringement cases often hinge on chip specifications, datasheets, and product manuals — dense technical documents requiring careful cross-reference against claim language.

The AI Workflow

Why It Works

Public documents — published datasheets, granted patents, and court filings — are safe to process in cloud-based AI environments like NotebookLM.

The AI cites specific sections of the datasheet, making it easy to verify accuracy and build a reliable record for litigation.

1 Import the datasheet

Upload the chip datasheet/technical documents into NotebookLM

2 Ask the decisive question

"Does the datasheet support the opposing party's claim that [technical detail X] is present? Why or why not?"

3 Review & apply

AI provides cited passages — attorney validates and builds the argument

The Most Critical Reminder

Confidential Data → Local AI Only

Client invention disclosures, unpublished applications, and internal strategy documents must **never** be uploaded to cloud-based AI services. Use on-premise AI engines exclusively for sensitive content.

Public Documents → Cloud AI Permitted

Published prior art, granted patents, public datasheets, and official office actions are safe for cloud AI tools such as NotebookLM, ChatGPT, or Gemini.

Professional judgment remains essential. AI responses are a starting point — not a final answer. Patent attorneys must evaluate, filter, and adapt AI output using their own expertise to best serve their clients.

Conclusion: Embrace AI or Risk Being Left Behind

AI Won't Replace You – But Ignoring It Might

AI tools will not replace patent attorneys and agents. However, those who **refuse to adopt AI** risk becoming obsolete in the profession.

Choose What Works for You

There are many AI tools available. Pick the ones that fit your workflow — **the best tool is the one you'll actually use.**

Your expertise is what matters most.

AI provides reference answers. Your professional skill is what turns those answers into **winning strategies** for clients.



Thank You for Listening!

Jason Chuang

Counselor & Senior Patent
Attorney

Lee and Li, Attorneys-at-Law

✉ GET IN TOUCH

jasonchuang@leeandli.com

